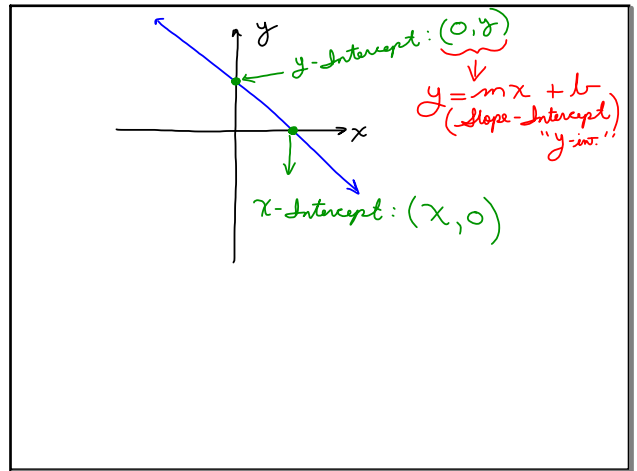
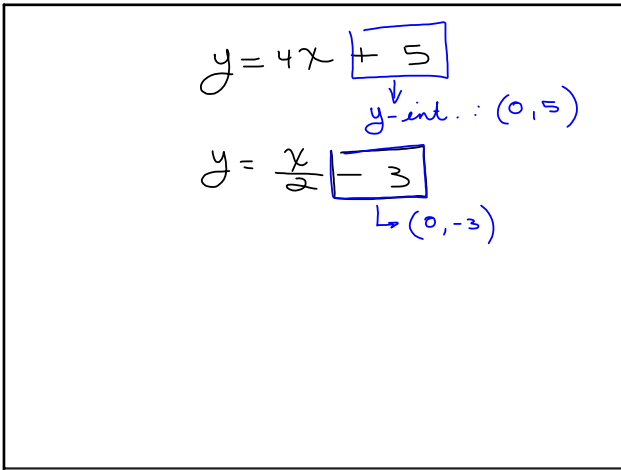


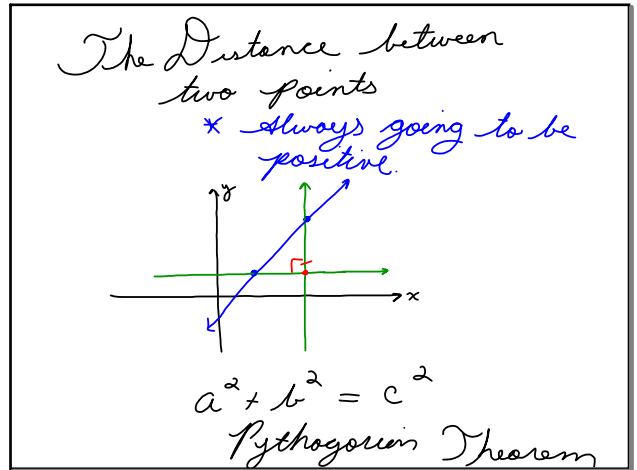
Sep 18-8:06 AM



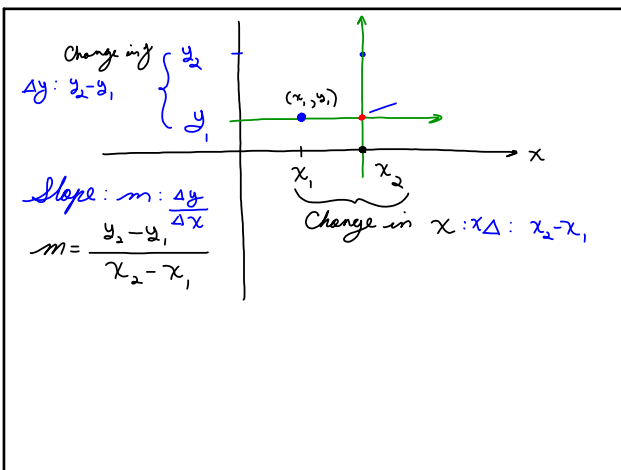
Sep 18-8:15 AM



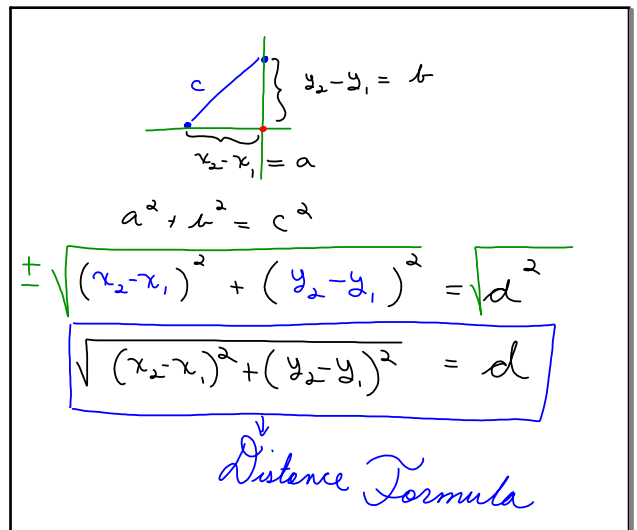
Sep 18-8:19 AM



Sep 18-8:22 AM

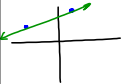


Sep 18-8:29 AM



Sep 18-8:35 AM

$(x_1, y_1) \neq (x_2, y_2)$
 $(5, 13) \neq (-4, 6)$



$$d = \sqrt{(x_2 - x_1)^2 + (y_2 - y_1)^2}$$

$$= \sqrt{(-4 - 5)^2 + (6 - 13)^2}$$

$$= \sqrt{(-9)^2 + (-7)^2}$$

$$= \sqrt{81 + 49}$$

$$d = \sqrt{130} \text{ units}$$

4
9
16
25
36
49
64
81
100
121

Sep 18-8:40 AM

$(-8, 7) \neq (4, -5)$

$$\sqrt{288} = \sqrt{16 \cdot 18}$$

$$= 4\sqrt{18}$$

$$= 4\sqrt{9 \cdot 2}$$

$$= 4 \cdot 3\sqrt{2}$$

$$= 12\sqrt{2} \text{ units}$$

Sep 18-8:47 AM